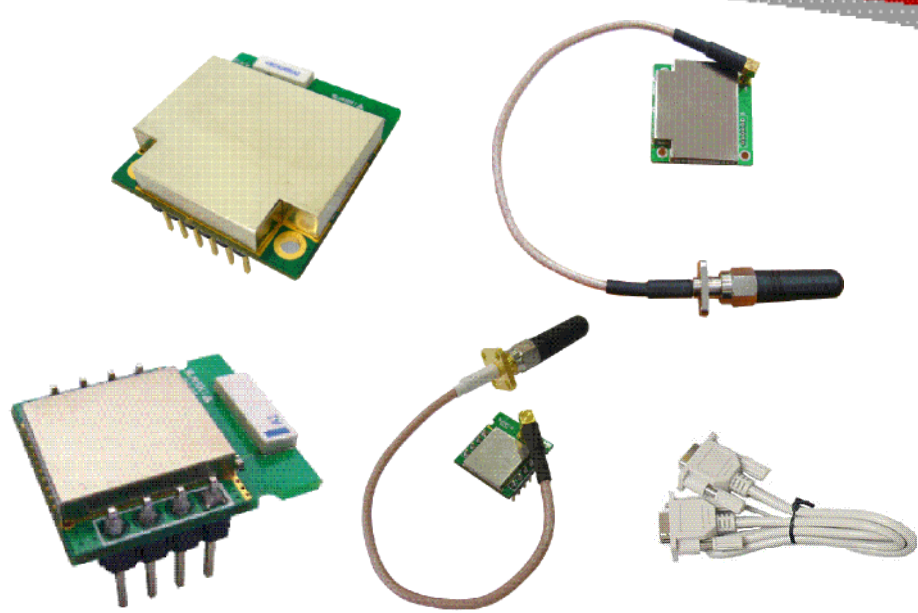


# Quick Start Guide

## Parani-ESD100/110/200/210

OEM Bluetooth-Serial module



### Pinout & Cabling

#### Parani-ESD100/110

Pin no.	Pin name	Direction	Description	Signal Level
1	GND		Power Ground	Ground
2	TXD	Output	UART data out	TTL
3	RXD	Input	UART data input	TTL
4	RTS	Output	UART Ready to Send	TTL
5	CTS	Input	UART Clear to Send	TTL
6	VDD	Input	DC input (3.0 ~ 3.3V)	Power
7	Pairing	Input	Pairing input (Active Low)	TTL
8	Status	Output	Bluetooth Connect Detect (Active Low)	TTL
9	DSR	Input	Data Set Ready	TTL
10	DTR	Output	Data Terminal Ready	TTL
11	RST	Input	Reset (Active Low)	TTL
12	GND		Power Ground	Ground

#### Parani-ESD200/210

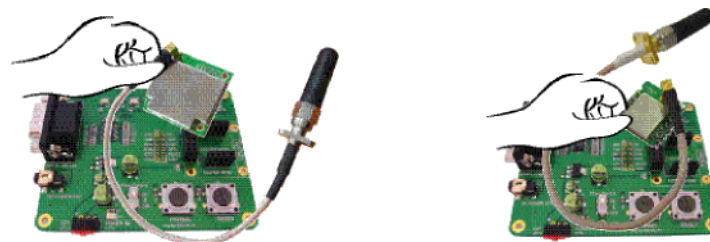
Pin no.	Pin name	Direction	Description	Signal Level
1	GND		Power Ground	Ground
2	VDD	Input	DC input (3.0 ~ 3.3V)	Power
3	Status	Output	Bluetooth Connect Detect (Active Low)	TTL
4	RST	Input	Reset (Active Low)	TTL
5	CTS	Input	UART Clear to Send	TTL
6	RTS	Output	UART Ready to Send	TTL
7	TXD	Output	UART data out	TTL
8	RXD	Input	UART data input	TTL

### Connection

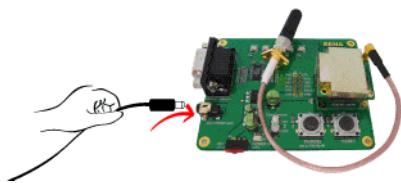
① Connect default(Stub) antenna to ESD Series



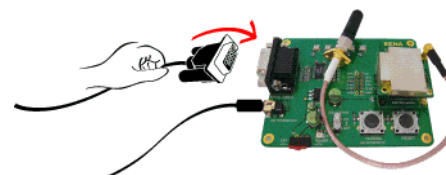
② Connect ESD Series to Jig Board



③ Connect serial cable to Jig Board



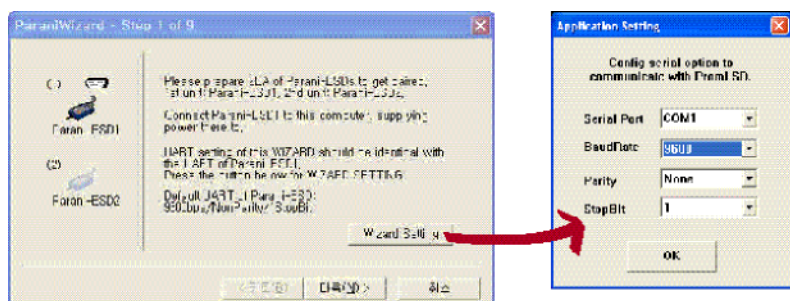
④ Connect Power supply to Jig Board



### Configuration

#### I. Configuration using the ParaniWizard

ParaniWizard is used for simple configuration of point-to-point communications between two Parani-ESD units.



Follow the steps in the ParaniWizard

Parani-ESD Series default configuration is 9600 bps Baud, 8 Data bit, No Parity, 1 Stop bit and H/W flow control.

#### II. Configuration using the ParaniWin or Hyper terminal program

Using ParaniWin or Hyper terminal program, user can make pairing in any of the following situations.

- Between two Parani-ESD units.
- Between a Parani-ESD unit and other Bluetooth device.

For connecting to other Bluetooth device, configuration mode must be set to "Mode 3(Connectable and Discoverable)".

For more information, refer to the User Manual.

You may download the ParaniWin, ParaniWizard and User Manual from CD or Sena website at <http://www.sena.com/support/downloads/>

Visit us at [www.sena.com](http://www.sena.com)

Copyright 1998-2006, Sena Technologies, Inc. All rights reserved